



**Hot Compressed Air Lance
Operation Manual**



www.heatlances.com

**LAB Manufacturing
9483 Reading Road
Cincinnati, OH 45215**

(800) 776-5830

PARTS CHECK LIST

NOTE: Check all fittings & connections prior to operation.

Your box should contain the following items:

≡ **A: Heat Lance**



≡ **B: Red propane regulator**



≡ **C: Regulator Gauge**



≡ **D: Hose Kit Assembly**



≡ **E: Air Coupler Q/D**



≡ **F: Propane Plug Q/D**



≡ **G: Black Air Filter**



≡ **H: Compressor Fitting**



≡ **I: Wheel Kit**



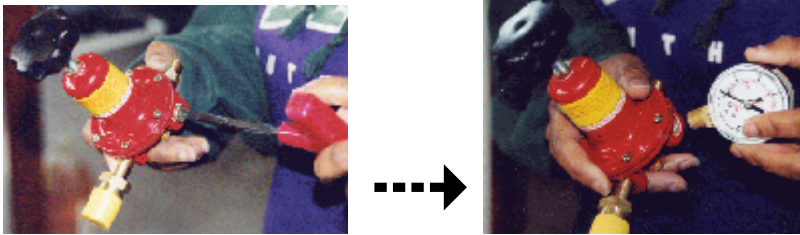
≡ **J: Shoulder Strap**



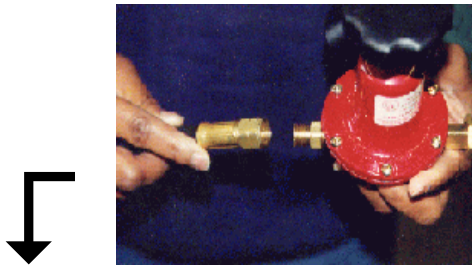
LA*B Hot Air Lance Assembly Instructions

To Assemble Your Unit

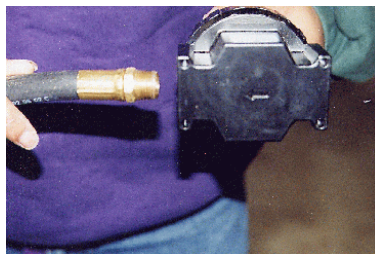
1. Remove stop nut from regulator. Insert regulator gauge in opening & tighten.



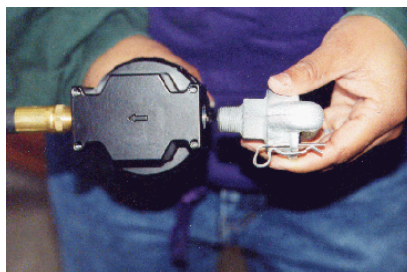
2. Attach female end of propane hose (smaller hose) to red gas regulator fitting & tighten. This is a left hand thread.



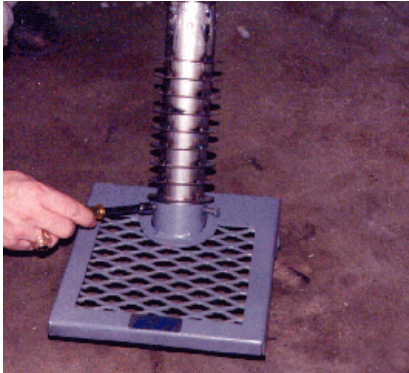
3. Attach air hose to the outlet side of the filter (towards arrow) and tighten.



4. Insert compressor tank fitting to inlet side (away from arrow) of black filter and tighten. Always use clip with fitting when in use.



5. Insert lance burner head into opening on wheel kit. Push unit all the way into opening and tighten bolts to hold unit in place.



If you have any problems with your assembly please contact your local LA*B Representative or LA*B (800) 776-5830.

Start Up & Operation

REMEMBER SAFETY FIRST

WARNING

Due to the heat & noise of the hot air lance, eye and hearing protection are advised. Boots, gloves and protective gear should be worn during operation of unit. Always check to be sure that all persons operating this equipment have read these instructions and are familiar with its operation and potential hazards. This unit can cause severe burns if used improperly.

This unit requires a minimum of at least 3/8" air supply hose with bore fittings and no more than 60' in length. Any additional distance requirements can be met by using a 3/4" air hose at compressor end. The air filter supplied with the unit must remain in an upright position to function properly.

When in operation, the unit is maintaining very high temperatures and extreme caution should be used. The unit must not be used near edges of buildings or near dry grassy areas. If so use extreme caution. LA*B takes no responsibility for misuse or improper operation. The lance must not be left unattended or left running and must not be set down or placed on flammable materials until it has cooled down.

Operation

- A. Make air and LP connections at lance handle. Insure all fittings and connections are tight. If leaks are detected **DO NOT OPERATE UNIT.** Tighten as needed and start over.



- B. To light unit, first **make sure no flammable materials are present in working area. When working with LP Gas always light the lance facing downwind. Be sure all operators have fully read this manual and are knowledgeable on its operation and safety hazards.**
- C. Set regulator to 15 - 20 psi on gauge
- D. Close both ball valves on lance. Both valves should be in vertical positions.
- E. Start air compressor
- F. Open air line on compressor.
- G. Open top ball valve (combustion valve) slightly to allow small amount of air flow through unit.



- H. Close LP Needle valve on lance.



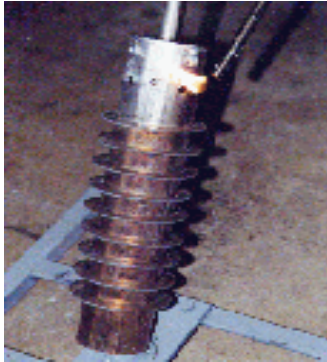
- I. Open LP Tank valve



J. Open LP needle valve $\frac{1}{4}$ turn



K. Using a long neck lighter, light lance in ignition holes atop of burner tube. **Never attempt to light lance at burner tube base as severe burns could result if LP Gas valve is too far open.**



L. Slowly open needle valve and top ball valve together. **(Be sure to open LP needle valve at a faster rate than air valve or unit will extinguish.** If this occurs close all valves and start over.) Once top ball valve is half way open, open bottom ball valve 100%.



M. Continue to open top ball valve and LP needle valve until top ball valve is wide open.

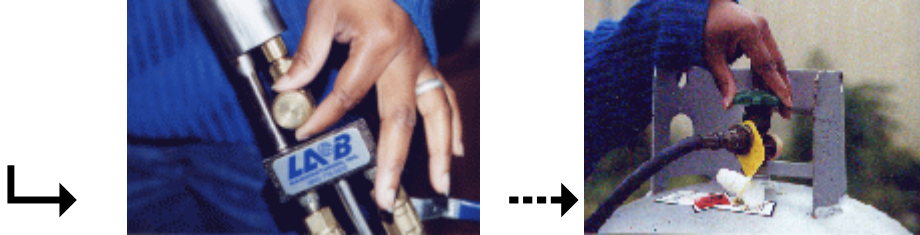
N. Slowly cut back the LP needle valve until lance produces a jet engine roaring sound and the flame is pulled back into the burner chamber. There should be no visible flame during operation. If there is a visible flame adjust LP settings at this time.



- O. To adjust the BTU downward, first slowly close down some air to the combustion system using the top ball valve. Then turn down the propane needle valve until the combustion is at its optimum mixture. No flame should be present at that time. Alternate between the air & propane settings in small steps until the desired setting is reached.

Shut Down Procedure

- A: Turn off propane supply by needle valve and propane tank.



- B. Allow air to flow through burner chamber and the air lance tube until they have cooled down.
- C. After unit(s) have had sufficient time to cool, shut down propane line and compressor line at main units.
- D. Disconnect hoses by way of fittings at lance handle.



Thank you for choosing LAB Hot Air Lances. We appreciate your business.